

# ER16-3-900

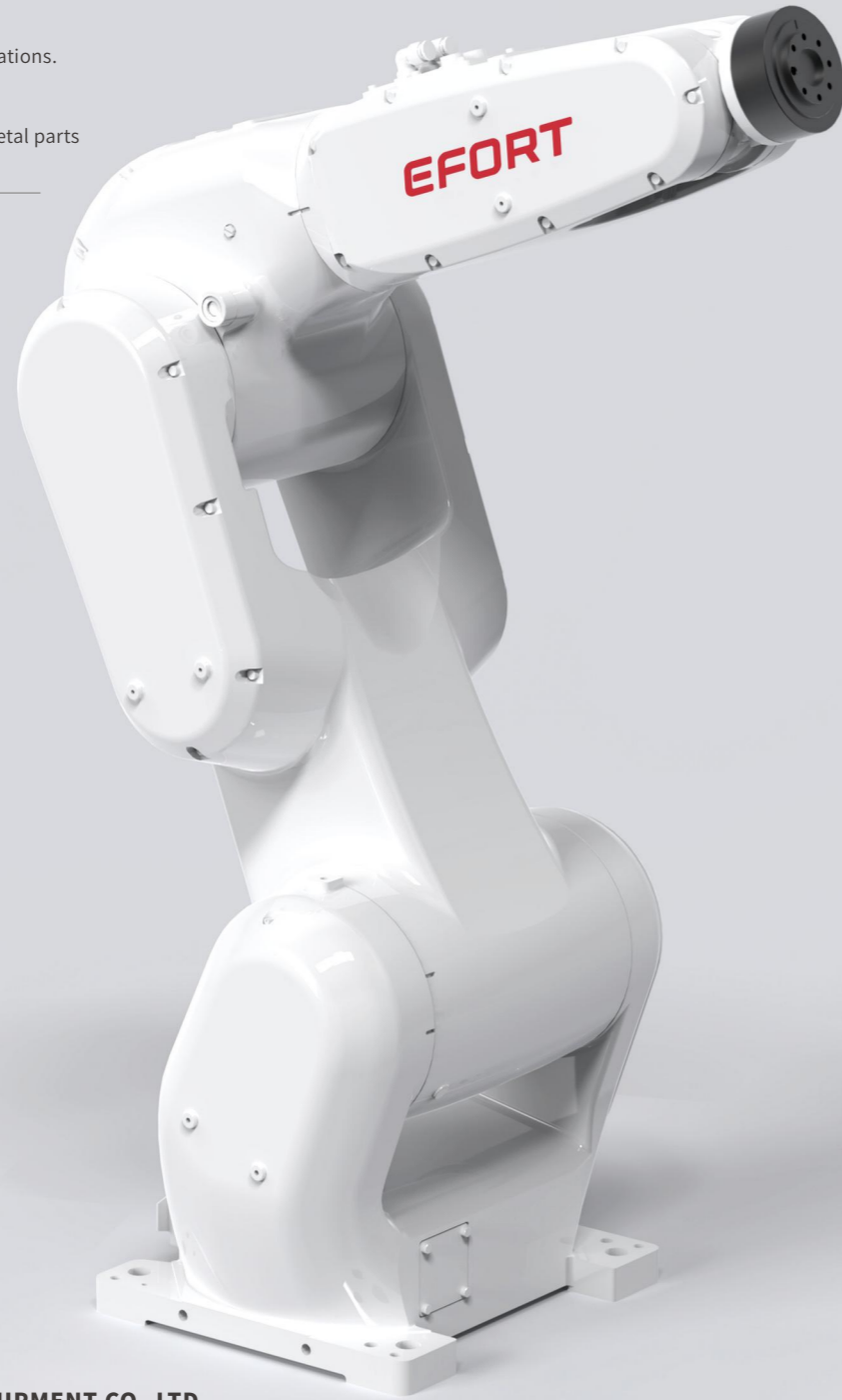
**EFORT**

**ER16-3-900,**  
**Maxium payload 16 kg with maxium reach 944 mm.**

■ **Highlights**  
 High protection level IP65 of the robor body help customers easy to face dusty, oil misty, high humidity and other harsh environment;  
 Thanks to the high stiffness transmission design and advanced trajectory algorithm, the improved robot accuracy performance helps customers to face variety of application scenarios.

■ **Applications**  
 It can be used in handling operations.

■ **Industries**  
 Suitable for PCB, 3C, plastic, metal parts and other industries.

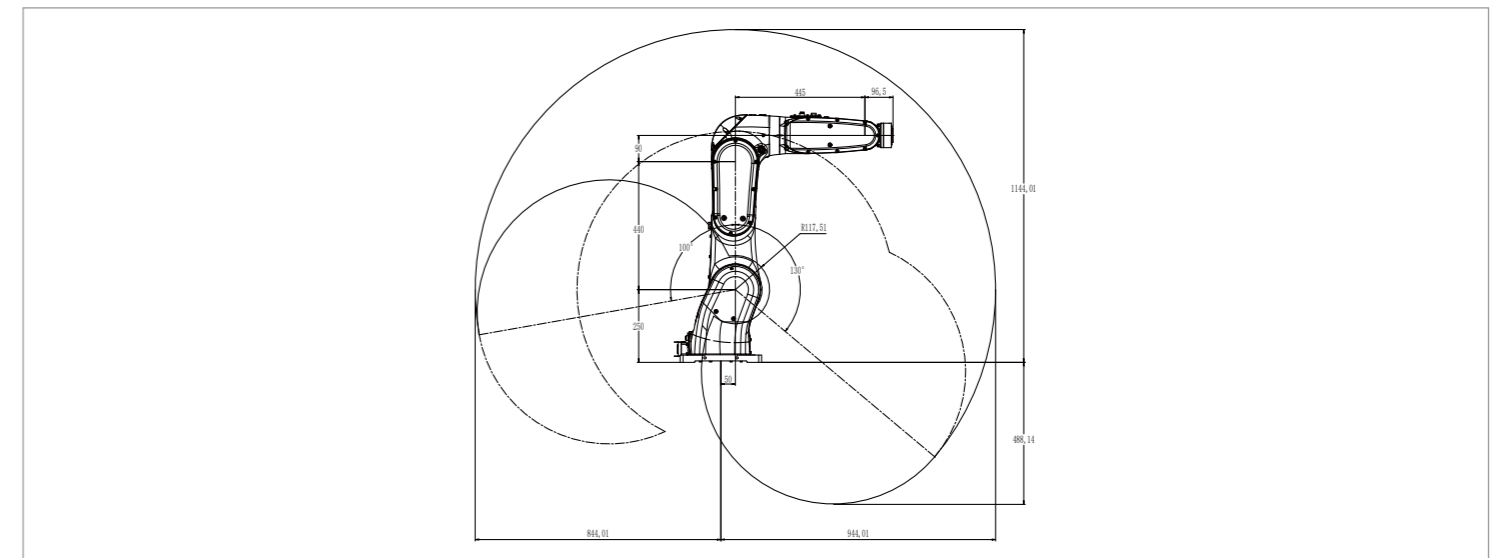


## SPECIFICATIONS

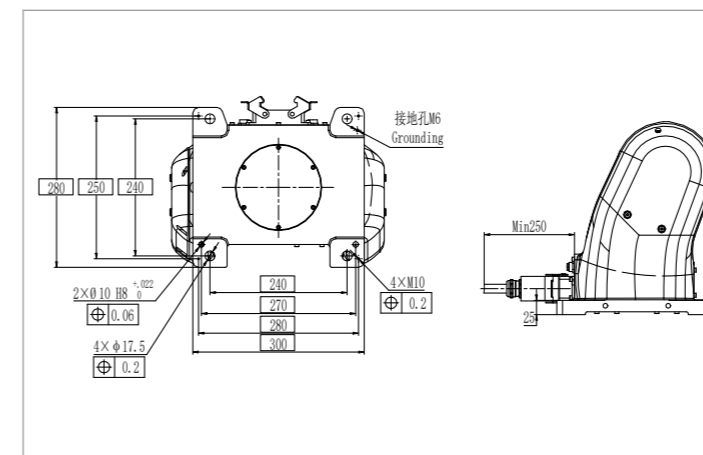
<b>Model</b>	ER16-3-900
<b>Type</b>	Articulated
<b>Controlled axes</b>	3 Axes
<b>Max. payload on wrist</b>	16 kg
<b>Repeatability</b>	±0.03 mm
<b>Robot weight</b>	56 kg
<b>Reach</b>	944 mm
<b>Robot IP grade</b>	IP65
<b>Cabinet IP grade</b>	IP20 / IP54 (Optional)
<b>Drive mode</b>	AC servo drive
<b>Installation</b>	Upside-down

<b>Installation enviroment</b>	<b>Ambient temperature</b>	0~45 °C
	<b>Ambient humidity</b>	RH≤80% (No dew nor frost allowed)
	<b>Vibration acceleration</b>	4.9 m/s <sup>2</sup> (<0.5 G)
<b>Allowable load moment at wrist</b>	<b>J3</b>	25 N·m
<b>Allowable load inertia at wrist</b>	<b>J3</b>	0.78 kg·m <sup>2</sup>
<b>Maximum speed</b>	<b>J1</b>	245°/sec
	<b>J2</b>	265°/sec
	<b>J3</b>	400°/sec
<b>Motion range</b>	<b>J1</b>	+100°/-130°
	<b>J2</b>	+193°/-75°
	<b>J3</b>	±120°

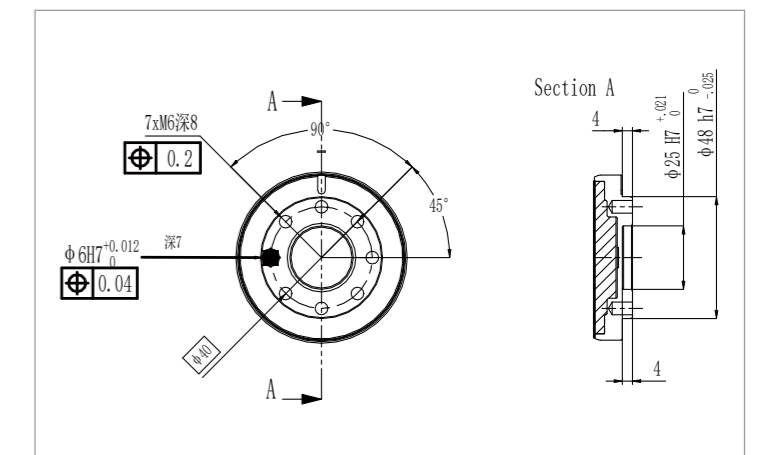
## OPERATING SPACE



## BASE MOUNTING SIZE



## END FLANGE MOUNTING SIZE



**EFORT INTELLIGENT EQUIPMENT CO.,LTD.**  
 PHONE: (00 86) 400-052-8877  
 ADDRESS: No.96 East Wanchun Road, China(Anhui) Pilot  
 Free Trade Zone Wuhu Area, Wuhu, Anhui Province, China  
 WWW.EFORT.COM.CN