

ER20-1100

EFORT

ER20-1100,
Maxium payload 20 kg with maxium reach 1143 mm.

■ **Highlights**

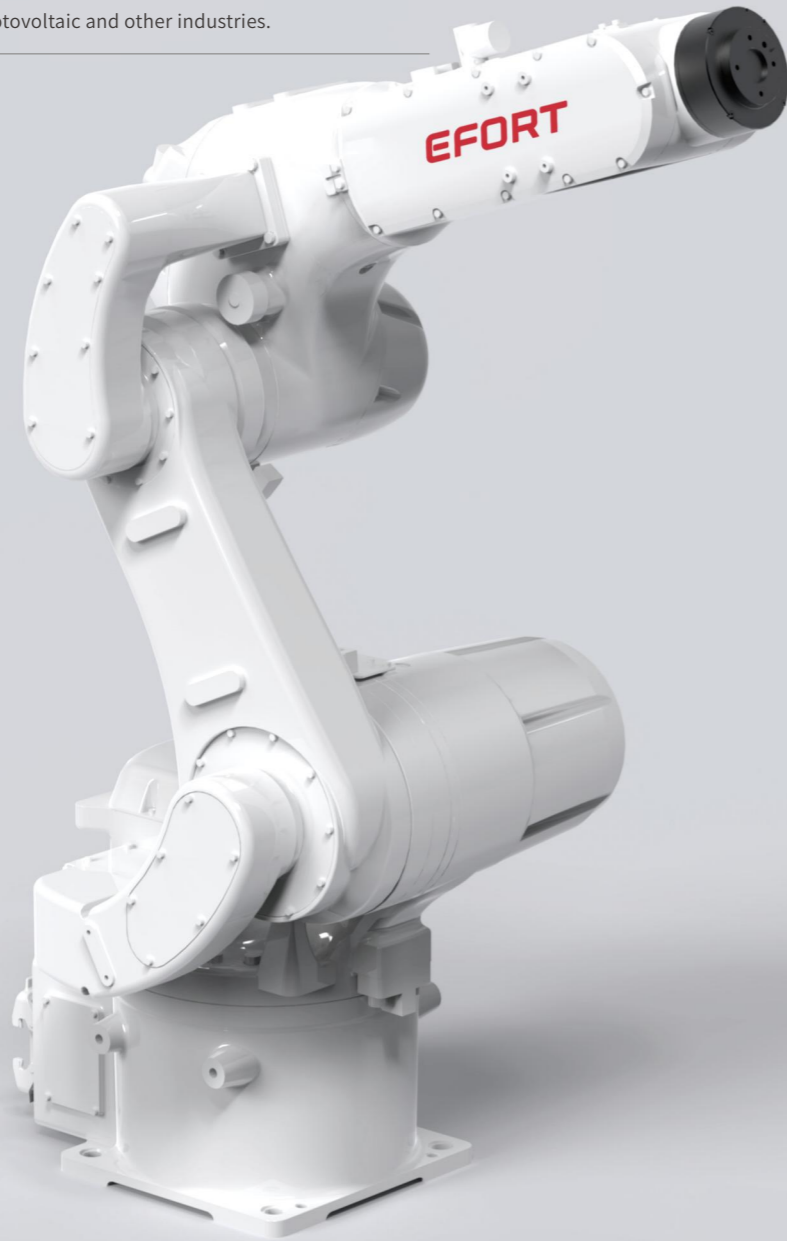
Thanks to the optimization of stiffness and inertia brought by the new mechanical design, with advanced trajectory algorithm. The takt improved by 20%-30%; 40% less monuting size of the base (comparing the previous types) plus compact cabinet design helps customers deploy the production line with more flexibility; IP67 wrist, high protection grade, to overcome harsh environment;

■ **Applications**

It can be used in handling operations, assembling, grinding, polishing, deburring, etc.

■ **Industries**

Suitable for PCB, metal parts, photovoltaic and other industries.

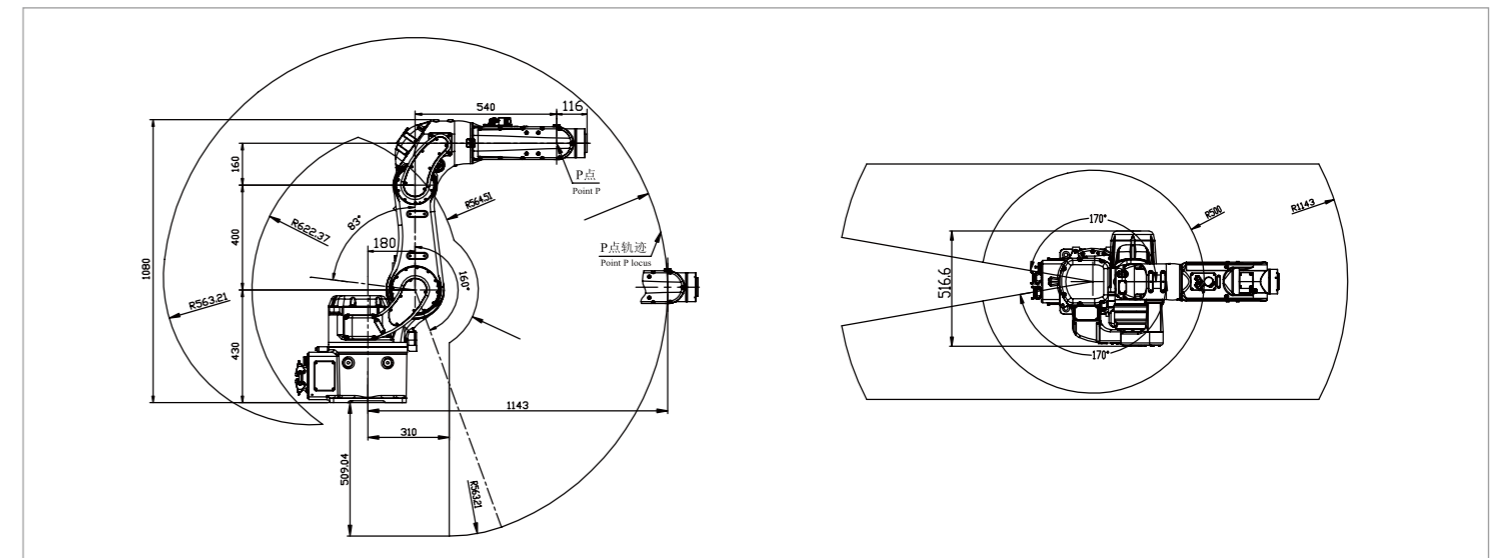


SPECIFICATIONS

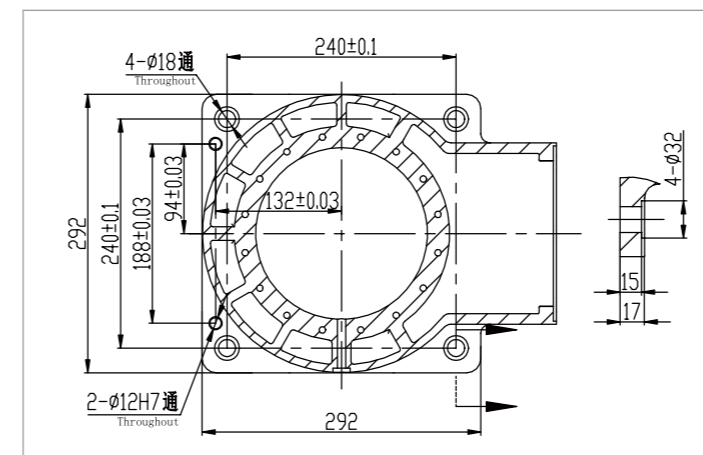
Model	ER20-1100	
Type	Articulated	
Controlled axes	6 Axes	
Max. payload on wrist	20 kg	
Repeatability	±0.03 mm	
Robot weight	145 kg	
Reach	1143 mm	
Robot IP grade	IP65/IP67 (Wrist)	
Cabinet IP grade	IP20/IP54 (Optional)	
Drive mode	AC servo drive	
Installation	Floor, Upside-down, Wall, Angle	
Installation enviroment	Ambient temperature	0~45 °C
	Ambient humidity	RH≤80% (No dew nor frost allowed)
	Vibration acceleration	4.9 m/s ² (<0.5 G)

Allowable load moment at wrist	J4	42 N·m
	J5	42 N·m
	J6	20 N·m
Allowable load inertia at wrist	J4	2 kg·m ²
	J5	2 kg·m ²
	J6	0.7 kg·m ²
Maximum speed	J1	260°/sec
	J2	255°/sec
	J3	210°/sec
	J4	450°/sec
	J5	450°/sec
	J6	600°/sec
Motion range	J1	±170°
	J2	+83°-160°
	J3	+175°-85°
	J4	±190°
	J5	±130°
	J6	±360°

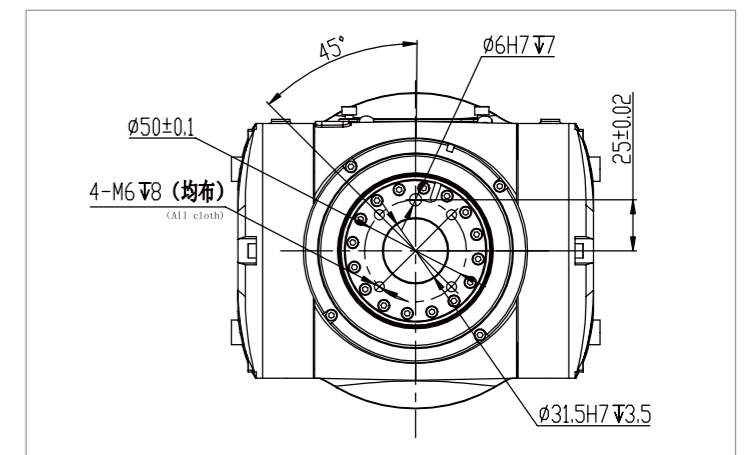
OPERATING SPACE



BASE MOUNTING SIZE



END FLANGE MOUNTING SIZE



EFORT INTELLIGENT EQUIPMENT CO.,LTD.

PHONE: (00 86) 400-052-8877

ADDRESS: No.96 East Wanchun Road, China(Anhui) Pilot

Free Trade Zone Wuhu Area, Wuhu, Anhui Province, China

WWW.EFORT.COM.CN