

ER12-1400

EFORT

ER12-1400,
Maxium payload 12 kg with maxium reach 1391 mm.

■ **Highlights**

The ER12-1400 robot has a maximum load of 12 kg and an arm span of 1391 mm, which is characterized by a wide working range and strong load capacity; The highly rigid wrist design and control algorithm can improve the positioning accuracy and dynamic performance of the robot. The repetitive positioning accuracy can reach 0.03 mm, the positioning time is 0.2 s; 3The fully enclosed mechanical body is not only compact in structure, but also covers a small area of 260 mm * 260 mm. It has high dust-proof and waterproof performance and secondary protection characteristics for special applications.

■ **Applications**

It can be used for handling operations (machine tending), sorting, assembling, grinding, polishing, Arc welding, etc.

■ **Industries**

Suitable for PCB, 3C, plastic, metal parts and other industries.

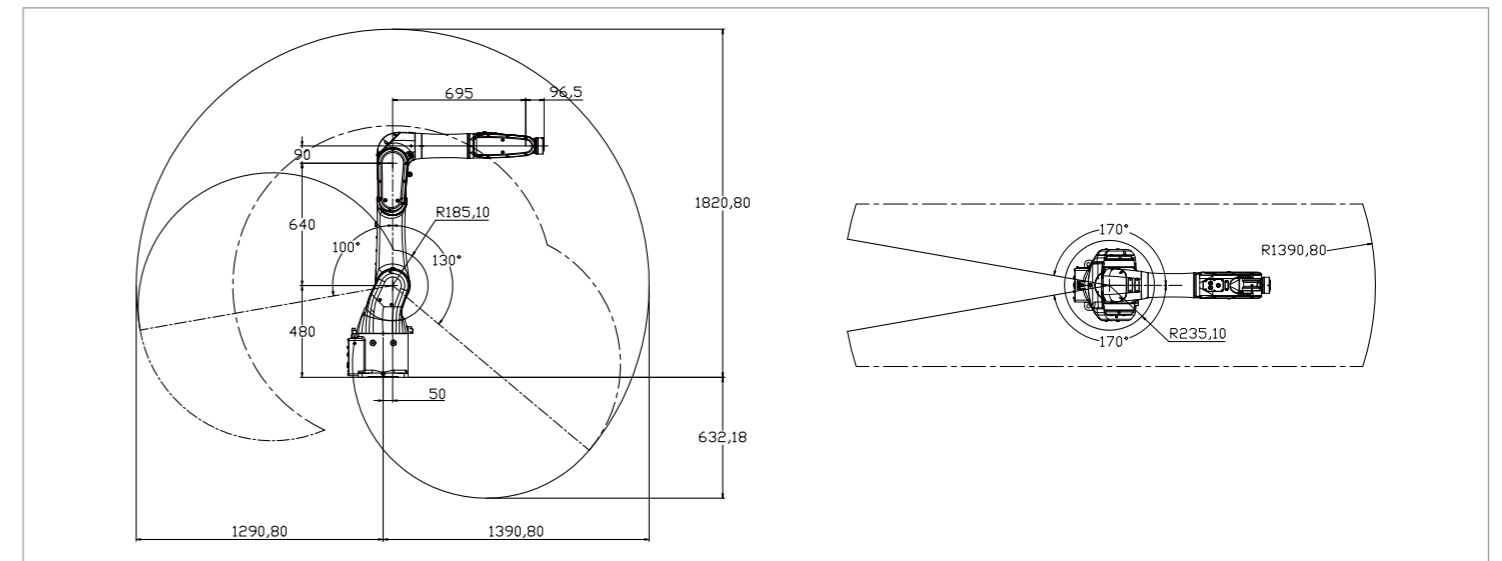


SPECIFICATIONS

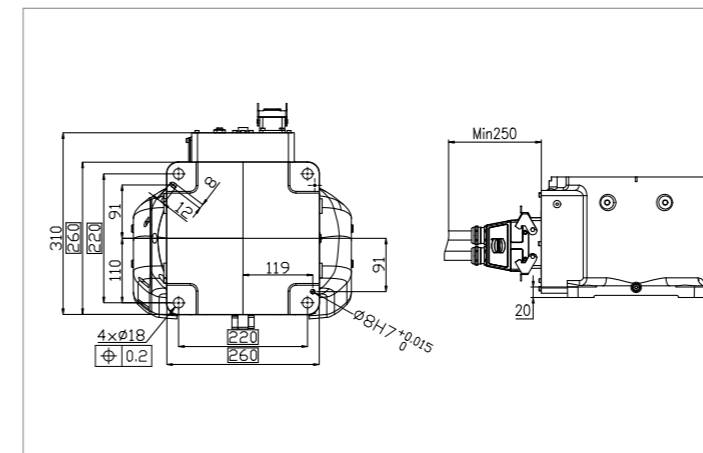
Model	ER12-1400	
Type	Articulated	
Controlled axes	6 Axes	
Max. payload on wrist	12 kg	
Repeatability	±0.03 mm	
Robot weight	90 kg	
Reach	1391 mm	
Robot IP grade	IP65 / IP67 (Wrist)	
Cabinet IP grade	IP20/ IP54 (Optional)	
Drive mode	AC servo drive	
Installation	Floor, Wall, Upside-down	
Installation enviroment	Ambient temperature	0~45 °C
	Ambient humidity	RH≤80% (No dew nor frost allowed)
	Vibration acceleration	4.9 m/s ² (<0.5 G)

Allowable load moment at wrist	J4	25 N·m
	J5	25 N·m
	J6	12 N·m
Allowable load inertia at wrist	J4	0.78 kg·m ²
	J5	0.78 kg·m ²
	J6	0.3 kg·m ²
Maximum speed	J1	200°/sec
	J2	180°/sec
	J3	220°/sec
	J4	400°/sec
	J5	420°/sec
	J6	600°/sec
Motion range	J1	±170°
	J2	+100°/-130°
	J3	+193°/-75°
	J4	±190°
	J5	±120°
	J6	±360°

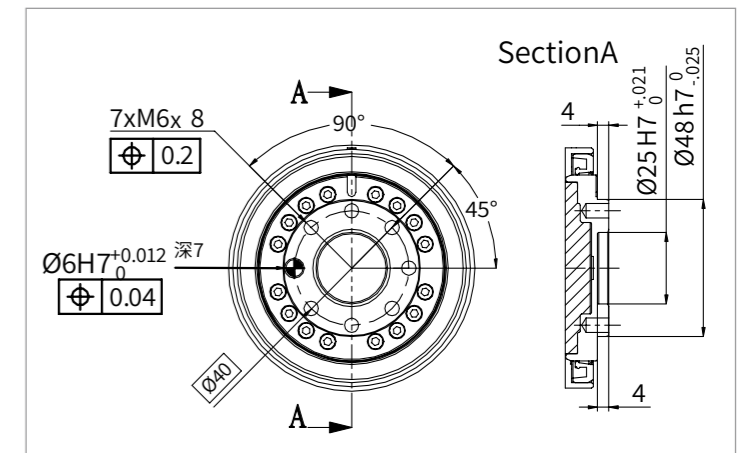
OPERATING SPACE



BASE MOUNTING SIZE



END FLANGE MOUNTING SIZE



EFORT INTELLIGENT EQUIPMENT CO.,LTD.

PHONE: (00 86) 400-052-8877

ADDRESS: No.96 East Wanchun Road, China(Anhui) Pilot

Free Trade Zone Wuhu Area, Wuhu, Anhui Province, China

WWW.EFORT.COM.CN