

ER10-4-900

EFORT

ER10-4-900,
Maxium payload 10 kg with maxium reach 860 mm.

■ **Highlights**

High inertia design of the robot wrist greatly improves the stability in high-speed movement. It plus advanced kinematic algorithms to helps the takt improved by 25%;
Thanks to industry-leading joint seal construction and oil leakage prevention design, the robot can help customers easily face various scenarios with high cleanliness requirements;
The 4th rotation axis offer more flexibility to variev kinds of robot mounting position.

■ **Applications**

It can be used in handling operations.

■ **Industries**

Suitable for PCB, 3C, plastic, metal parts and other industries.

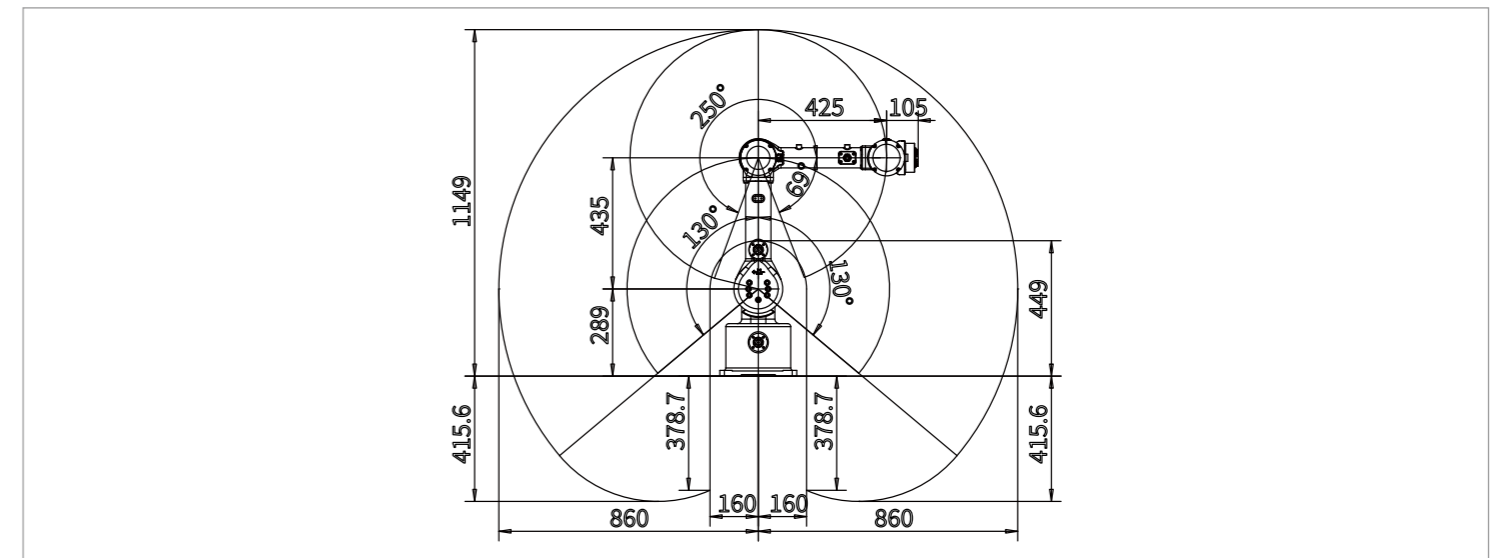


SPECIFICATIONS

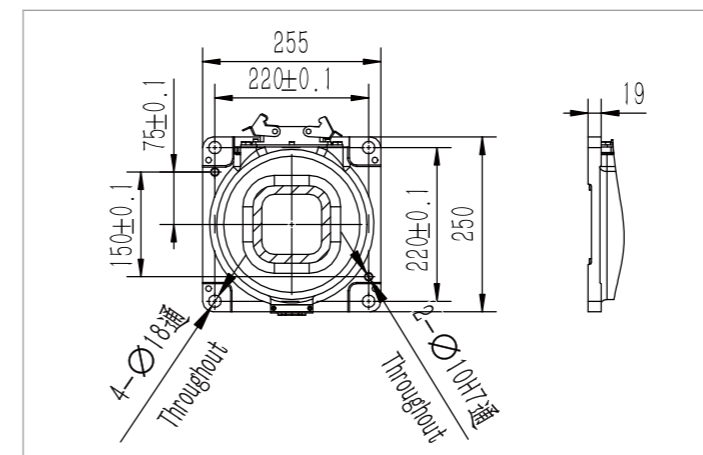
Model	ER10-4-900	
Type	Articulated	
Controlled axes	4 Axes	
Max. payload on wrist	10 kg	
Repeatability	±0.05 mm	
Robot weight	35 kg	
Reach	860 mm	
Robot IP grade	IP54	
Cabinet IP grade	IP20	
Installation enviroment	Ambient temperature	0~45 °C
	Ambient humidity	RH≤80% (No dew nor frost allowed)
	Vibration acceleration	4.9 m/s ² (<0.5 G)

Drive mode	AC servo drive	
Installation	Upside-down	
Allowable load moment at wrist	J3	20 N·m
	J4	8 N·m
Allowable load inertia at wrist	J3	1.5 kg·m ²
	J4	0.8 kg·m ²
Maximum speed	J1	300°/sec
	J2	320°/sec
	J3	380°/sec
	J4	600°/sec
Motion range	J1	±130°
	J2	+250°/-69°
	J3	±130°
	J4	±360°

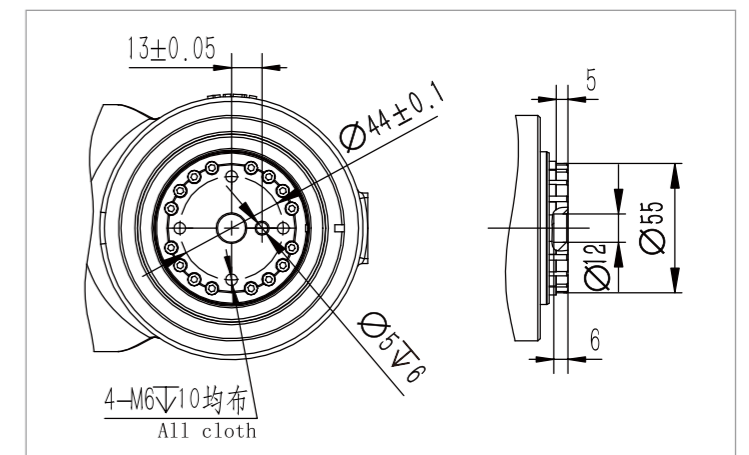
OPERATING SPACE



BASE MOUNTING SIZE



END FLANGE MOUNTING SIZE



EFORT INTELLIGENT EQUIPMENT CO.,LTD.

PHONE: (00 86) 400-052-8877

ADDRESS: No.96 East Wanchun Road, China(Anhui) Pilot

Free Trade Zone Wuhu Area, Wuhu, Anhui Province, China

WWW.EFORT.COM.CN