

ER10-3-900

EFORT

ER10-3-900,
Maxium payload 10 kg with maxium reach 860 mm.

■ **Highlights**

High inertia design of the robot wrist greatly improves the stability in high-speed movement. It plus advanced kinematic algorithms. helps the takt improved by 25%;
Thanks to industry-leading joint seal construction and oil leakage prevention design, the robot can help customers easily face various scenarios with high cleanliness requirements.

■ **Applications**

It can be used in handling operations.

■ **Industries**

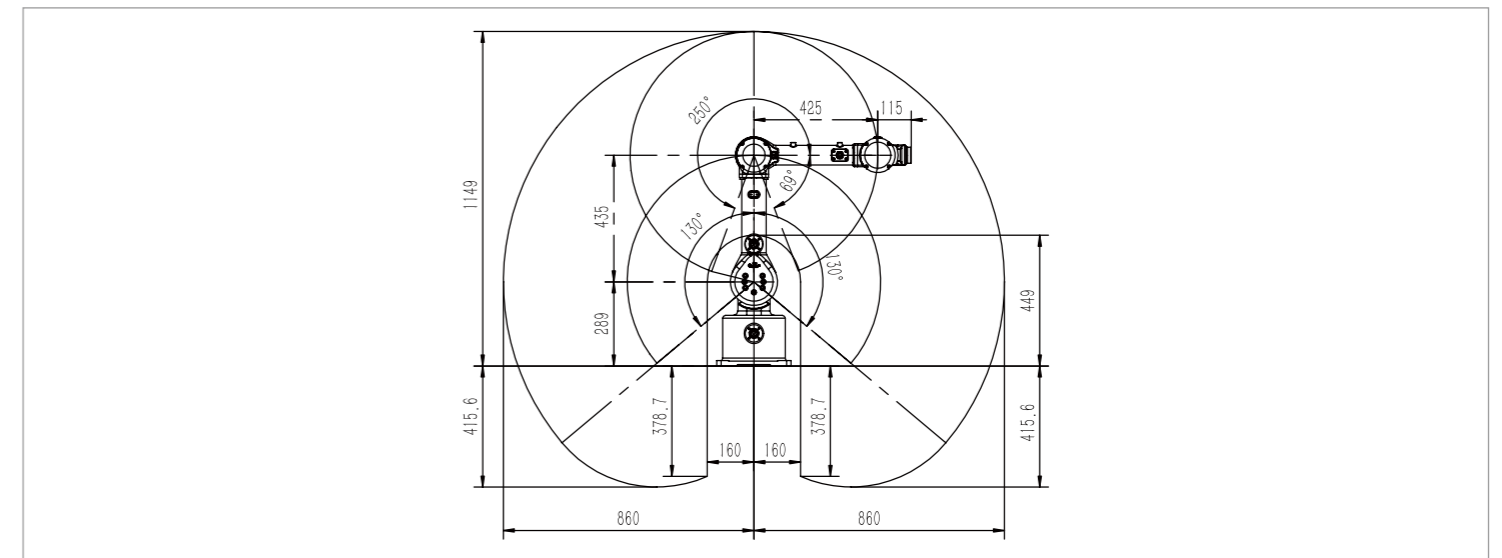
Suitable for PCB, 3C, plastic, metal parts, and other industries.



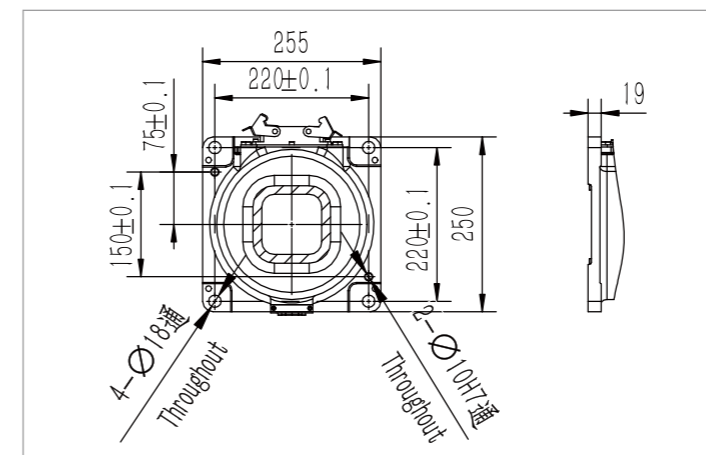
SPECIFICATIONS

Model	ER10-3-900	Ambient temperature	0~45 °C
Type	Articulated	Ambient humidity	RH≤80% (No dew nor frost allowed)
Controlled axes	3 Axes	Vibration acceleration	4.9 m/s ² (<0.5 G)
Max. payload on wrist	10 kg	Allowable load moment at wrist	J3 20 N·m
Repeatability	±0.05 mm	Allowable load inertia at wrist	J3 1.5 kg·m ²
Robot weight	30 kg	Maximum speed	J1 300°/sec
Reach	860 mm		J2 320°/sec
Robot IP grade	IP54		J3 380°/sec
Cabinet IP grade	IP20	Motion range	J1 ±130°
Drive mode	AC servo drive		J2 +250°/-69°
Installation	Upside-down		J3 ±130°

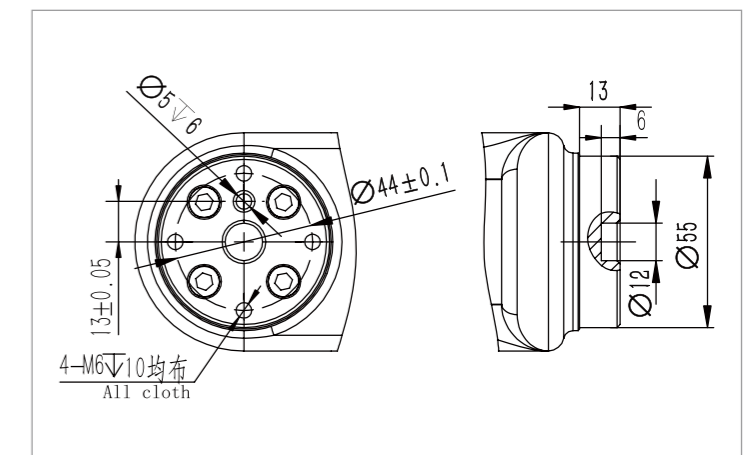
OPERATING SPACE



BASE MOUNTING SIZE



END FLANGE MOUNTING SIZE



EFORT INTELLIGENT EQUIPMENT CO.,LTD.
PHONE: (00 86) 400-052-8877
ADDRESS: No.96 East Wanchun Road, China(Anhui) Pilot
Free Trade Zone Wuhu Area, Wuhu, Anhui Province, China
WWW.EFORT.COM.CN